

DESyne[®] X2

NOVOLIMUS ELUTING CORONARY STENT SYSTEM

DELIVERING PROVEN RESULTS



NOW IN EXPANDED SIZES!

EXCEPTIONAL DELIVERABILITY

INNOVATIVE HUB TO TIP DELIVERY SYSTEM

25% MORE DELIVERABLE[†]

ULTRA THIN DESYNE STENT

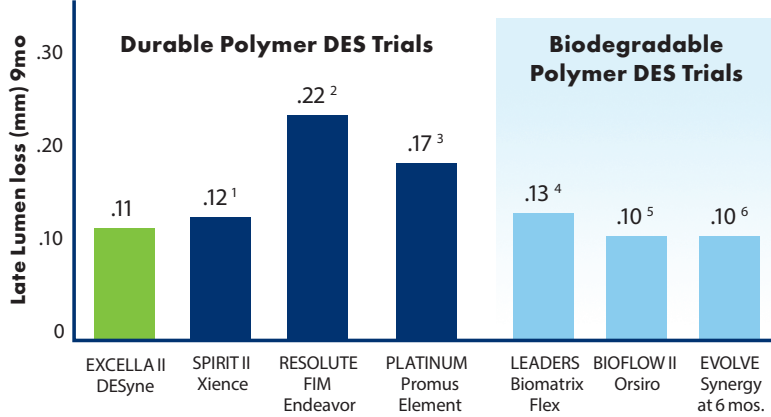


Polymer Thickness $\lt; 3\mu\text{m}$

81 μm

Drug Load 85 μg
(18mm length)

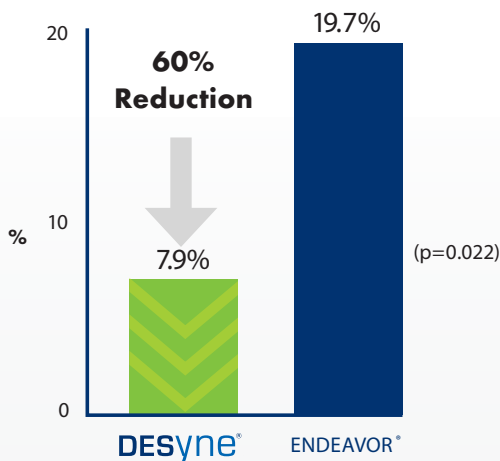
Lowest Published Late Lumen Loss (0.11mm) for a Durable Polymer DES (9 months)



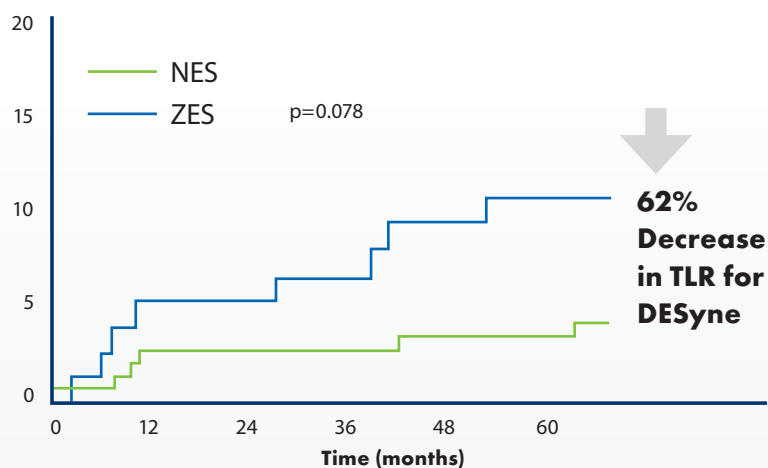
1. Low profile stent delivery system for high flexibility and deliverability
2. Lowest polymer and drug load

SUPERIOR CLINICAL RESULTS AT FIVE YEARS – EXCELLA II RCT⁷

Device Oriented Composite Events* (DoCE)**



CI – Target Lesion Revascularization*



[†] As compared to DESyne. Data on file at Elixir Medical.

* Non-hierarchical

** DoCE = Cardiac Death, MI not clearly attributable to a non-intervened vessel, CI-TLR

¹ Serruys P, et al, A randomised comparison of an everolimus-eluting coronary stent with a paclitaxel-eluting coronary stent: the SPIRIT II trial, EuroIntervention 2006.

² Meredith IT, et al, Clinical and angiographic results with the next-generation resolute stent system: a prospective, multicenter, first-in-human trial. JACC (2009).

³ Meredith IT, Whitbourn R, Scott D, et al, PLATINUM QCA: EuroIntervention. 2011.

⁴ Windecker, S. et al, (LEADERS): a randomised non inferiority trial; The Lancet 2008; 372 No. 9644: 1163-1173.

⁵ Windecker S. et al, BioFlow II Trial, Circulation: Cardiovascular Intervention 2015.

⁶ Meredith IT, Primary Endpoint Results of the EVOLVE Trial: A Randomized Evaluation of a Novel Bioabsorbable Polymer-Coated, Everolimus-Eluting Coronary Stent, 2012.

⁷ Iqbal J. et al., DESyne novolimus-eluting stent is superior to Endeavor zotarolimus-eluting stent at five-year follow-up. EuroIntervention 2016.

DESyne[®] X2

NOVOLIMUS ELUTING CORONARY STENT SYSTEM

INNOVATING VASCULAR RESTORATION
LEADING THE WAY TO NEXT GENERATION DES PLATFORMS

DESYNE X2 ORDERING INFORMATION

Stent Diameter (mm)	Stent Length (mm)					
	14	18	23	28	32	38
NEW SIZES 2.25	SZR2214	SZR2218	SZR2223	SZR2228	SZR2232	SZR2238
2.5	SZR2514	SZR2518	SZR2523	SZR2528	SZR2532	SZR2538
2.75	SZR2714	SZR2718	SZR2723	SZR2728	SZR2732	SZR2738
3.0	SZR3014	SZR3018	SZR3023	SZR3028	SZR3032	SZR3038
3.5	SZR3514	SZR3518	SZR3523	SZR3528	SZR3532	SZR3538
4.0	SZR4014	SZR4018	SZR4023	SZR4028	SZR4032	SZR4038

Some sizes may not be available in all geographies.

CE MARK APPROVED. NOT AVAILABLE IN ALL GEOGRAPHIES.

Caution: The law restricts these devices to sale by or on the order of a physician. Indications, contraindications, warnings and instructions for use can be found in the product labeling supplied with each device.

Elixir Medical Corporation specializes in developing products that combine state-of-the-art medical devices with advanced pharmaceuticals to provide innovative treatment solutions to patients worldwide.



Jl. Warung Jati Raya NO 14C Kalibata,
Pancoran - Jakarta Selatan 12540

Contact :

Dra. Siti Rochyati Ningsih
0877 8146 2293

Wiji Santoso, SE
0813 1477 5843

Lilis Nurhayati S.Si
0812 9940 9885